

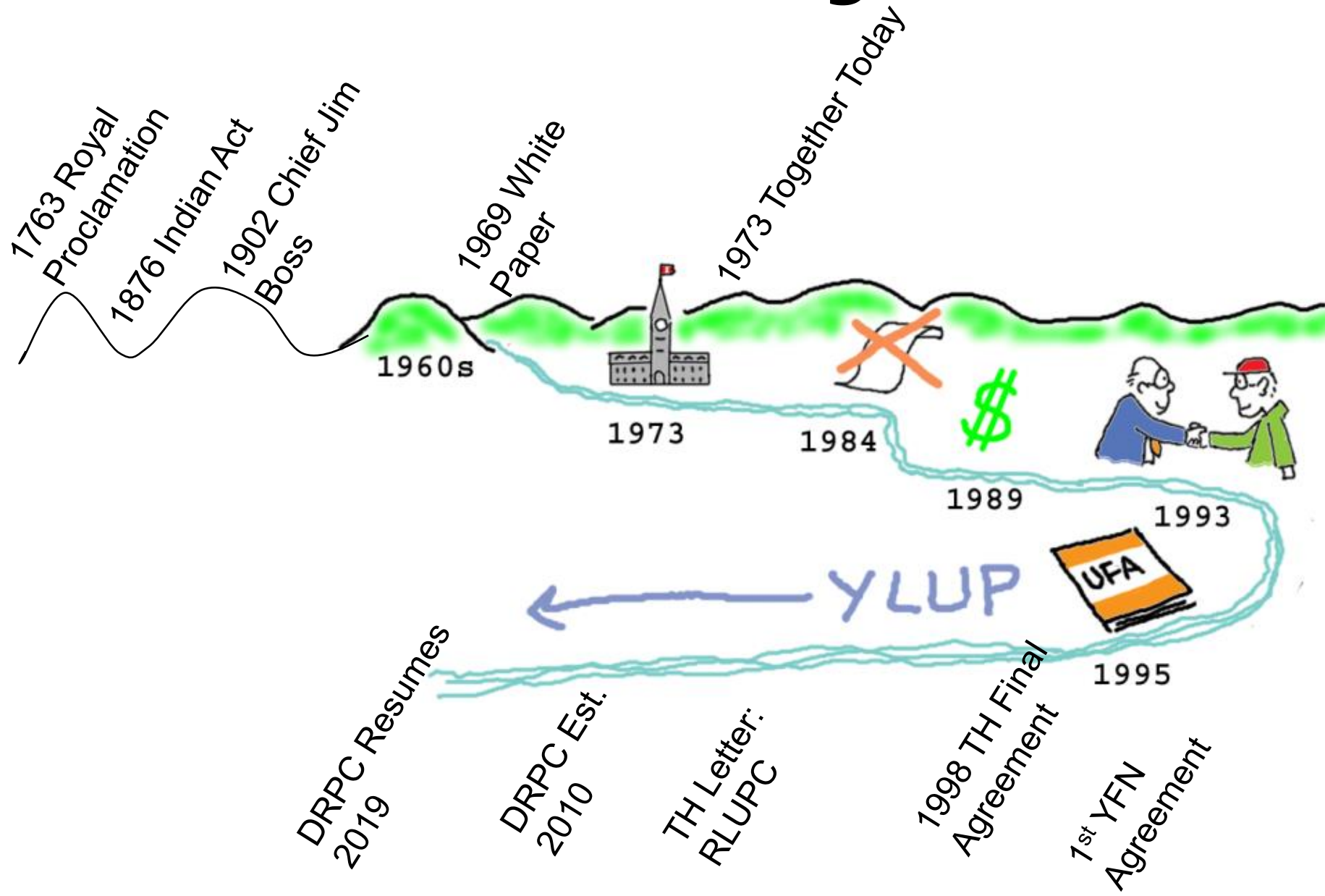
CHAPTER 11 - LAND USE PLANNING OBJECTIVES

- to encourage the development of a common Yukon land use planning process outside community boundaries;
- to minimize actual or potential land use conflicts both within Settlement Land and Non-Settlement Land and between Settlement Land and Non-Settlement Land;
- to recognize and promote the cultural values of Yukon Indian People;

CHAPTER 11 - LAND USE PLANNING OBJECTIVES

- to utilize the knowledge and experience of Yukon Indian People in order to achieve effective land use planning;
- to recognize Yukon First Nations' responsibilities pursuant to Settlement Agreements for the use and management of Settlement Land; and
- to ensure that social, cultural, economic and environmental policies are applied to the management, protection and use of land, water and resources in an integrated and coordinated manner so as to ensure Sustainable Development.

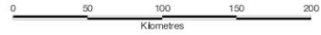
Land Claims and Regional Planning





YUKON LAND USE
PLANNING COUNCIL

YUKON PLANNING REGIONS

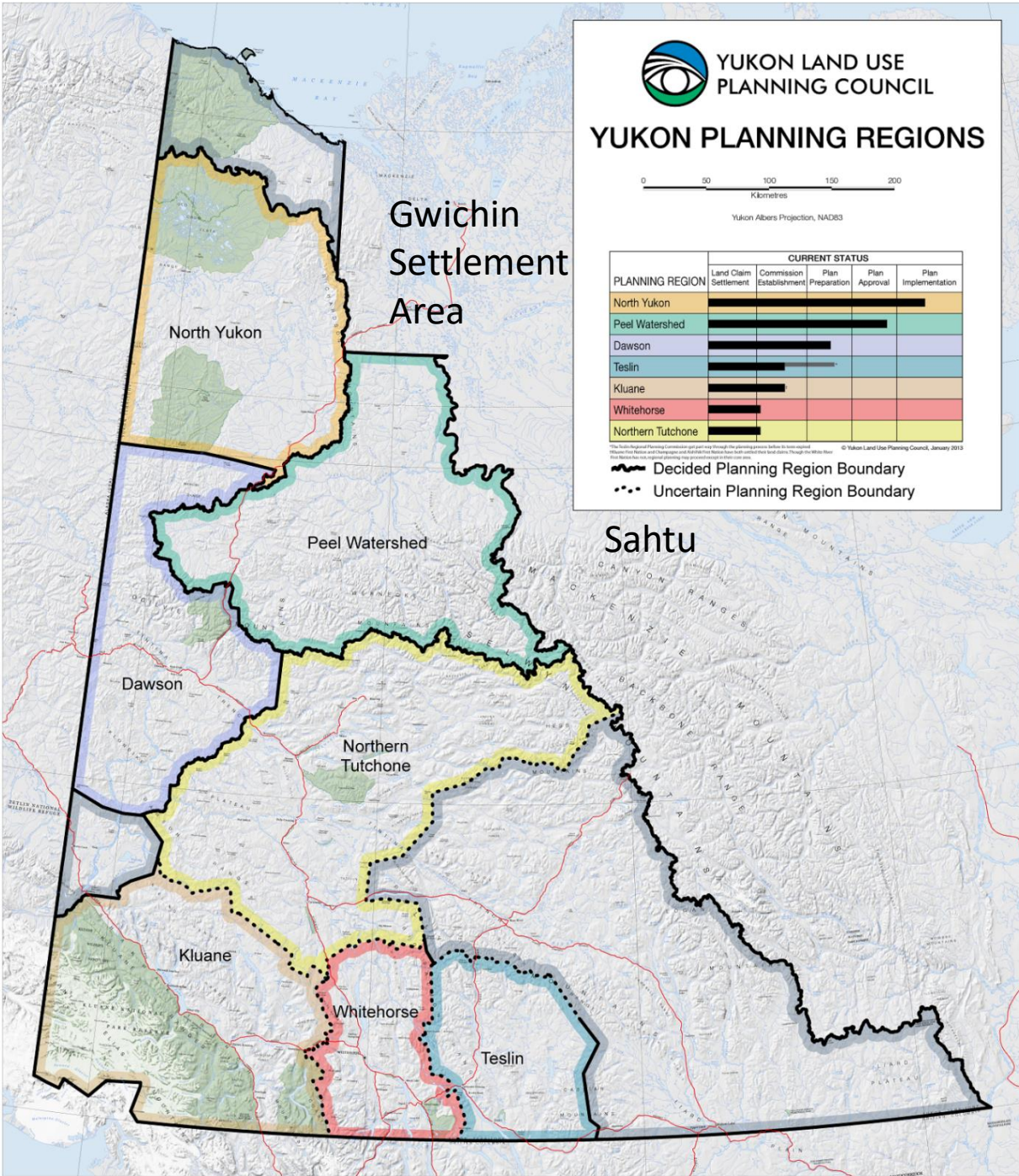


Yukon Albers Projection, NAD83

PLANNING REGION	CURRENT STATUS				
	Land Claim Settlement	Commission Establishment	Plan Preparation	Plan Approval	Plan Implementation
North Yukon	██████████	██████████	██████████	██████████	██████████
Peel Watershed	██████████	██████████	██████████	██████████	██████████
Dawson	██████████	██████████	██████████	██████████	██████████
Teslin	██████████	██████████	██████████	██████████	██████████
Kluane	██████████	██████████	██████████	██████████	██████████
Whitehorse	██████████	██████████	██████████	██████████	██████████
Northern Tutchone	██████████	██████████	██████████	██████████	██████████

The Yukon Regional Planning Commission and its members are not responsible for the accuracy of the information shown on this map. The Yukon Land Use Planning Council, January 2013.

- Decided Planning Region Boundary
- Uncertain Planning Region Boundary



What's Coming Next?

- Approved Peel plan
- Draft Plan for the Dawson Region: late 2020
- Not clear which region will follow Dawson: YLUPC will make recommendation after engagement with YG/YFNs (workshop?)
- Integrating First Nation Planning into Chapter 11 regional planning: on the land gathering
- Increased communication