

Land and Resources Management in the Yukon

The Role of Regional Planning

Sam Skinner (Senior Planner, YLUPC)
Gillian McKee (Senior Planner, YG-EMR)



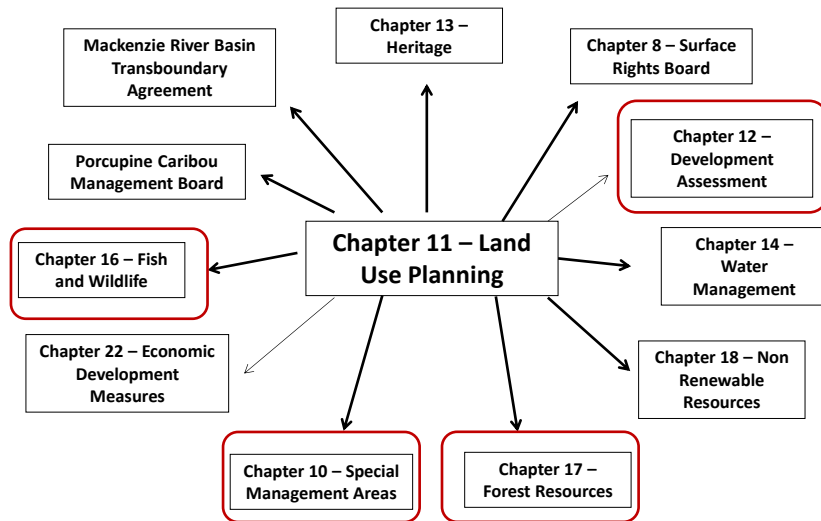
Overview

- Examples of linkages of Chapter 11 planning with other chapters (Sam)
- Overview of planning process products (Gillian)
- Case studies of plan implementation (Sam)

→ land and resource management



Chapter 11, the UFA and Other Related Agreements



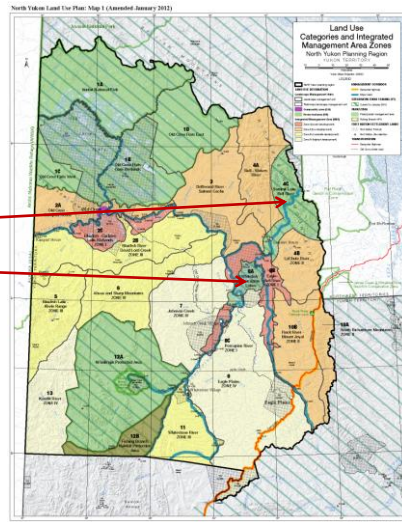
Ch10: Special Management Areas

- “Special Management Area” is an umbrella term for any area identified through a land claims process
 - Many types
 - Many rationales
- Land use planning is effectively the only mechanism for establishing new SMAs after Land Claims are settled



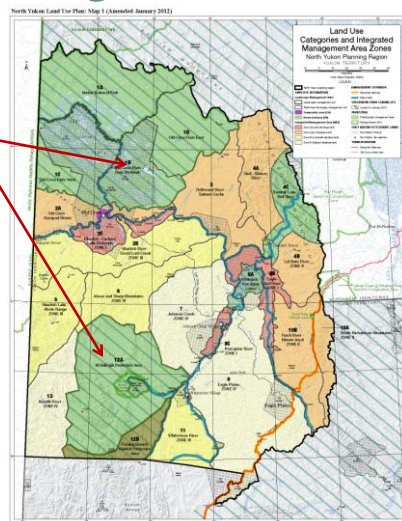
Ch10: Special Management Areas

- The North Yukon Plan recommended two new “Protected Areas”
 - Summit Lake – Bell River
 - Whitefish – Porcupine Lakes



Ch10: Special Management Areas

- Regional plans would have little influence on established SMAs
- Established SMAs fall within planning regions
(no doughnut holes!)



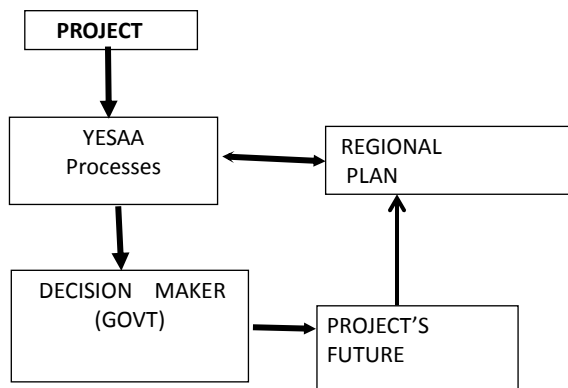
Chapter 12: Development Assessment

- **Final Agreements say*:**
YESAB refers project proposals to relevant Planning Commission to determine if the project conforms
- **The current arrangement:**
The YLUPC is determining project conformity on behalf of the North Yukon Planning Commission

*paraphrased

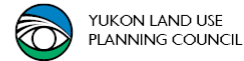


Regional Planning and Project Specific Review (YESAA)



Planning contributions to development assessment

- Compiling data and maps of important values



Planning contributions to development assessment

- Prescribing acceptable uses for each zone

“...Oil and gas, mining and other industrial land uses are not allowed...”

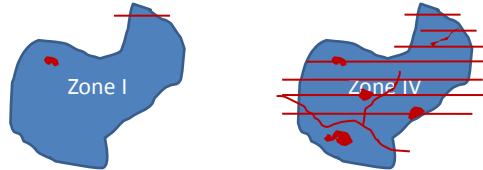


“...Higher levels of land use are consistent with Zone IV objectives.”



Planning contributions to development assessment

- Describing disturbance or development limits for each zone
- E.g.,:
 - Surface Disturbance
 - Linear Density



IMA Zone	Management Intent	Cumulative Effects Indicators	Cautionary Level	Critical Level
Zone I ²	Lowest development	Surface disturbance	0.075%	0.1%
		Linear density	0.075 km/km ²	0.1 km/km ²
Zone II	Low development	Surface disturbance	0.15%	0.2%
		Linear density	0.15 km/km ²	0.2 km/km ²
Zone III	Moderate development	Surface disturbance	0.375%	0.5%
		Linear density	0.375 km/km ²	0.5 km/km ²
Zone IV	Highest development	Surface disturbance	0.75%	1.0%
		Linear density	0.75 km/km ²	1.0 km/km ²



YUKON LAND USE
PLANNING COUNCIL

Planning contributions to development assessment

- Describing the vision or the management intent of each zone
 - “Lowest Development:
...Maintaining ecological integrity and protecting heritage and cultural resources is the priority...”
 - ↕
 - “...Highest Development:
Higher levels of land use are consistent...”



YUKON LAND USE
PLANNING COUNCIL

Planning contributions to development assessment

- General strategies and management practices

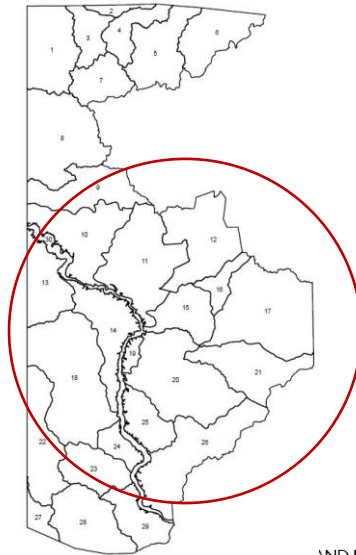
GOAL 2 – WILDLIFE	
Maintain terrestrial habitat in a condition required to sustain regional wildlife populations.	
...Coordinate, manage and minimize new road and trail access	
...Avoid or reduce activities	
...Where possible, direct new access routes through less significant wildlife habitats...	
INDICATORS	<ul style="list-style-type: none"> • Where possible, direct new access routes through less significant wildlife habitats. • Surface disturbance. • Linear density. • Other indicators to be determined through future research and plan implementation.



YUKON LAND USE
PLANNING COUNCIL

Ch17: Forest Resources

- When a FRMP is in place before planning:
 - Often use same management units
 - Considers other plan directions
- When a regional plan is in place before a FRMP, the FRMP must be consistent with the regional plan.



YUKON LAND USE
PLANNING COUNCIL

Ch16: Fish & Wildlife

- No direct linkage with planning
- Planning shall “take into account that the management of land, water and resources, including Fish, Wildlife and their habitats, is to be integrated;”



YUKON LAND USE
PLANNING COUNCIL