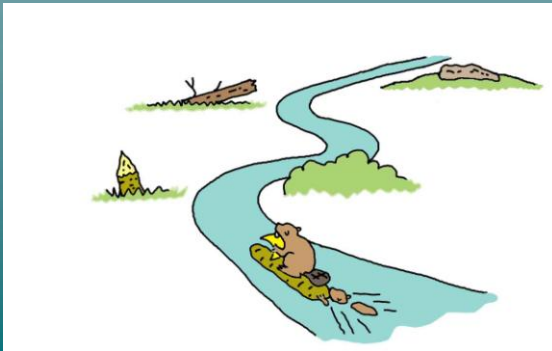


Conditions for Successful Regional Land Use Planning

January 21, 2014



Presentation Outline

- **Prerequisite for Successful Planning:**
Commitment, Policy Direction, Impartial Process, Information, Implementation (Strategic Land Use Planning, Source Book, British Columbia, 1996)
- **Specific Conditions for the Yukon:**
Priority Planning Regions Assessment, Terms of Reference
- **List of Conditions for Your Consideration during your Break-out session**



Commitment

- Political Commitment to Planning (publicly communicated)
- Public and Interest Groups (e.g. industry, NGOs) Accept the Need for Planning
- “Adequate” Budget
- To Form Communication Channels Between Planners and Politicians



YUKON LAND USE
PLANNING COUNCIL

Policies

- Government policy on land uses relatively balanced across all land uses
- Government policy relevant is either clear (written down) or the need for policy is recognized and requested of the Commission
- Any stated government policy should generally be supported by the public
- Time for discussion between planners and politician during process



YUKON LAND USE
PLANNING COUNCIL

Information Needs

- Key information themes available from the outset, at appropriate scale, summarized
- Information linked to issues
- Impact of potential land uses known
- Technical capacity for analysis available



YUKON LAND USE
PLANNING COUNCIL

Impartial Commission & Professional Planning Process

- Planning Commission (and Staff) perceived as neutral
- Visible effort to establish “level planning field” and consider wide range of public interest
- Planning staff: experts in planning process and planning technics



YUKON LAND USE
PLANNING COUNCIL

Plan Implementation

- Responsible agencies are clear
- Confidence in those agencies to implement is wide-spread
- Tools in place for implementation



YUKON LAND USE
PLANNING COUNCIL

Other Conditions

- There are Issues (land use conflicts) that need to be addressed. No constitutional or legal related conflicts
- Not so time sensitive (safety, emergency, military)
- Key government staff organizational structures in support of planning, time commitments made
- Information about land resources is readily available



YUKON LAND USE
PLANNING COUNCIL

Yukon Specific Conditions

- **Request** to Begin the Process for Establishing the Commission (First Nations)
- **Boundary** of the Planning Region is agreed to
- **Planning Process** timeline/products
- Budget for the Commission's work
- **Membership** based upon Demographics and Appointment Process



YUKON LAND USE
PLANNING COUNCIL

Terms of References Dawson Regional Planning Commission

Contents:

Definitions and Acronyms

1. Introduction
2. Purpose of the Terms of Reference
3. Mandate of the Commission
4. Purpose of the Plan
5. Objectives for the Regional Land Use Plan
6. Requirements of the Regional Land Use Planning Process
7. Boundary and Application of the Plan
8. Membership of the Planning Commission
9. Operating Procedures for the Commission
10. Budget/Work Plan Considerations
11. Relationships Between the Commission, Council, and the Parties
12. Public Participation and Engagement
13. Planning Process and Products
14. Data, Background and Research Information
15. Plan Approval
16. Amending and Monitoring the TOR



YUKON LAND USE
PLANNING COUNCIL

ASSESSING PLANNING REGION - READINESS TO PLAN (GENERAL)	
KEY QUESTIONS	
BACKGROUND INFORMATION	Who are the affected First Nations associated with this planning region? When was formal request made by YGNs to establish Commission?
GOVERNANCE	What is the effective date of the Land Claim and Self-Government Agreements? Are there trans boundary issues that could affect planning? What is the status of the settlement of overlap areas between First Nations who have traditional territory in the region?
CAPACITY ASSESSMENT	What is the capacity of Yukon Government to participate in this planning exercise? What about the First Nations?
PLANNING CONTEXT	What are the major planning issues facing the region? Is there an immediate need for regional planning? What plans are already in place? What is the current status of other regional planning exercises in the territory? (NYPC, , PWPC, TRPC, NTC ?)
INFORMATION MANAGEMENT	Is there information sharing accords in place with respect to cultural and heritage information? (ie. traditional environmental knowledge) Is this information organized (ie. Digital files) and in what form? Is there an active adjacent planning commission that could supply information?
TOP ISSUES	What are the major issues that will require resolution in the Terms of Reference for this region?

Top 10 for Break-out Group Assessment

In your region/territory:

- How is the political support for planning?
- How is public and interest groups support?
- Is there land use conflict that require planning?
- Are there any issues so controversial, constitutional or vying for attention that they will prevent planning from proceeding?



- How well developed are policies relating to land use: Clear and in unison with other Governments?
- Are Human Resources Available and Committed?
- Is information about the Land and Resources readily available? What about land use impact information?



YUKON LAND USE
PLANNING COUNCIL

- How are your relationships with Other Governments? Neighbouring Governments?
 - How are lines of communications between various land management governments?
 - Any other conditions affecting planning?
- If you answer “don’t know”, how would we find out?*



YUKON LAND USE
PLANNING COUNCIL