

Gwich'in Settlement Area Regional Land Use Plan

Northwest Territories

For: Northern Planning Conference,
Whitehorse, Yukon

By: Ron Cruikshank, Director Yukon Land Use Planning Council
Former Land Use Planner/Coordinator Gwich'in Settlement Area



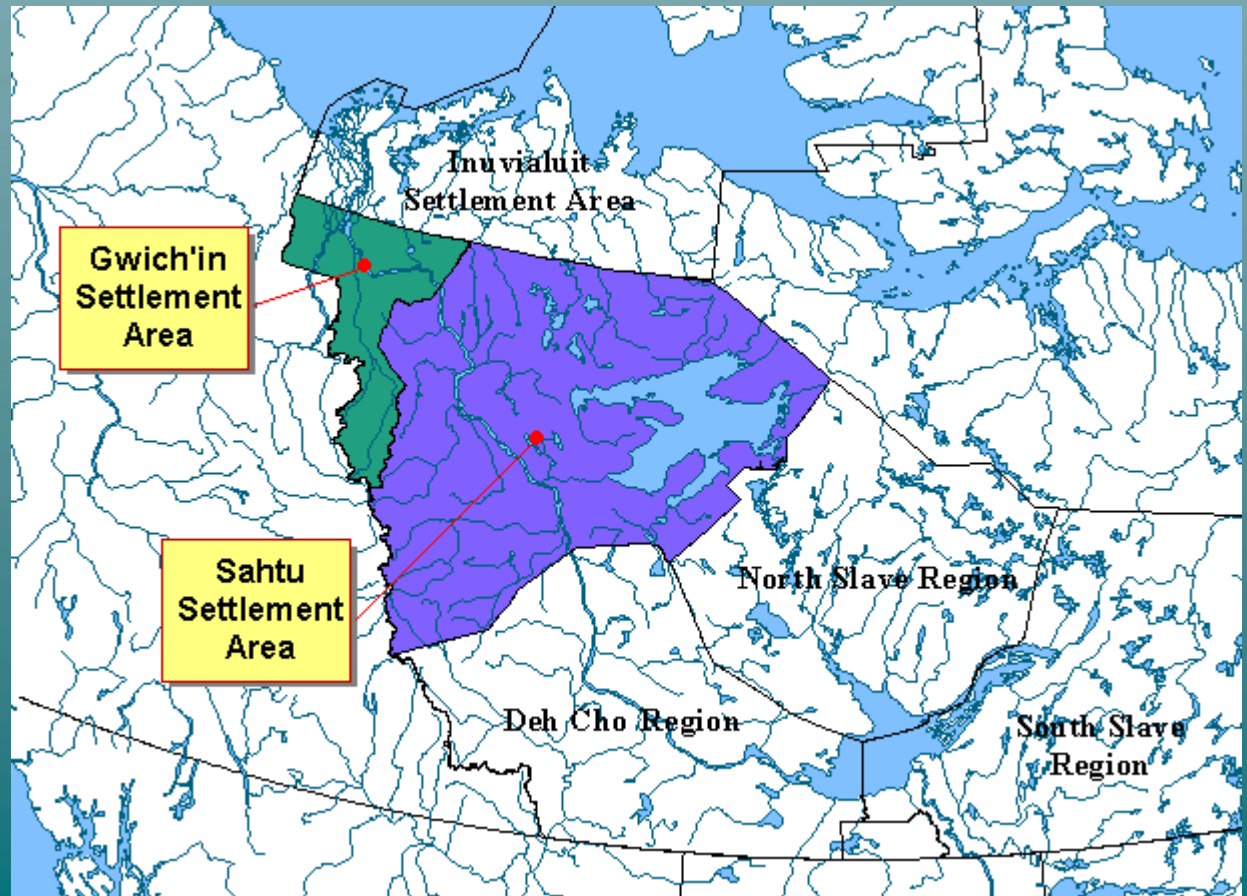
Presentation Outline

1. Regional Introduction
2. What was *Good* about this plan?
3. Context
4. Preparing Plan:

Regional Introduction

Gwich'in are the majority of the population, traditional land based economy

Region has oil and gas potential, pipeline routes, Dempster Highway, Mackenzie Hwy



This Plan is A Good Example of:

- “Community Based” Regional Planning
- Use of Traditional Knowledge, involvement of First Nations



This Plan is A Good Example of:

- Simplicity of Process and Product
- Implementation and Review Cycle
- creating “protected areas” are tied the “life of the plan” (flexible)



Context

- **Berger Report: pipelines after land claims and land use plans**
- **Mackenzie Delta Beaufort Sea Land Use Plan (Federal Plan, not approved)**

Agreement Before Commission Created

- **Gwich'in Comprehensive Land Claim Agreement, 1992**
- **Mackenzie Valley Resource Management Act, 1998 (Part 2): Regional Planning Legislation!**



Commission Start-up

A three year work plan/budget was proposed and approved



Plan Production: Issue and Interest

- Public meetings and presentation in each communities, written submission
- Issue report very simple: one page per issue

Information Gathering

- Resource Information: Summaries done through “domain expert” workshops
- **Included forecast summary:** current activities, near future, long term
- First Nations Seasonal Use Maps and other maps available from the Mackenzie Delta Beaufort Sea Planning exercise



“Options” Stage

- Options Paper identified planning direction prior to draft plan production
- (legislation interpretation)

“Options” Stage

A Discussion Paper: Issues and did not include land designation maps

Interpreted the Principles set out in the legislation

Asked and Answered Question like:

What is meant by “well being”? How can a land use plan promote “well being”? How will the interests of all Canadian in the GSA be addressed?

Goals, principles for draft plan process, principles for the plan



Legislation Interpretation

“...every body shall carry out their powers in accordance with the land use plan...” MVRMA 46(1)

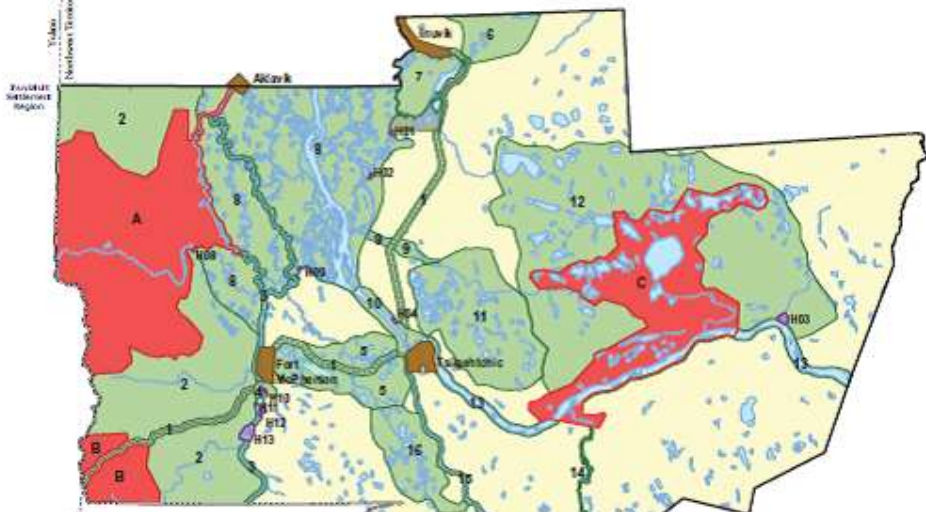


Legislation Interpretation

*“A land use plan may include:
(c) descriptions of permitted
and prohibited uses of land,
waters and resources”;*

Gwich'in Settlement Area : Process





- Conservation
- Heritage Conservation
- Special Mgt.
- General Use

450
kms

Gwich'in Settlement Area



Land Designation System Application

- Landscape Management Units: Community based mapping (mental maps/traditional knowledge)
- Integrated Community and Resource Managers Knowledge
- Gwich'in Tribal Council: why did they select their land blocks?



Plan Approval

- Took 5 years: conflict between the authority of the Plan to restrict activities and the allowance in the Canada Mining Regulations for access to land
- Ultimately the Conservation Areas were created through land withdrawals



Plan Implementation

- Lead and monitored by the Planning Board
- Very detailed implementation plan, updated
- Includes detailed policy statements regarding conformity check, plan amendments

Plan Review and Revision

- Lead by the Planning Board, with input from approval Parties
- First Revision currently nearing completion



Production

Approval

Revision

Implementation

