

*Life* is like a box of  
*Chocolates...*  
you *never* know  
what you're going to *get*





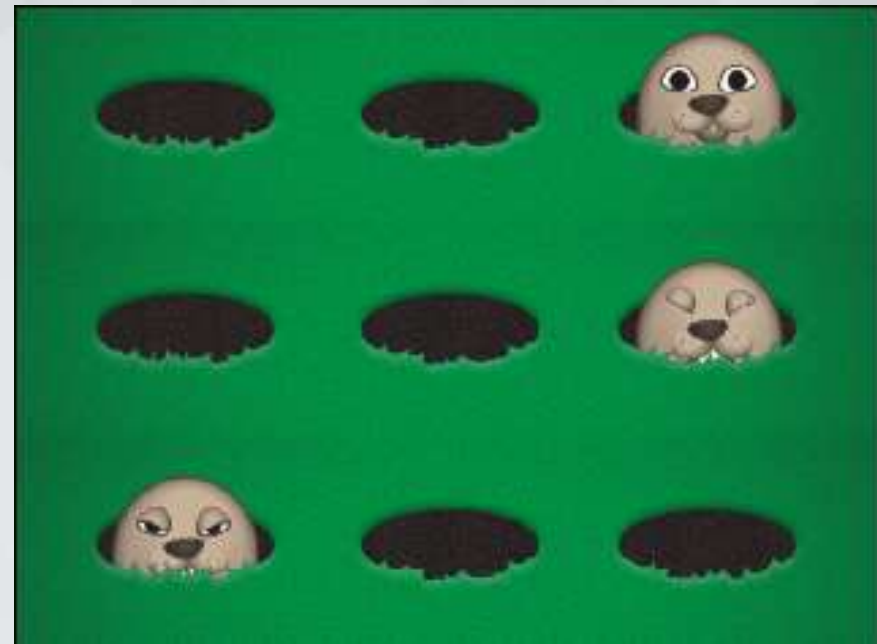
# outdoor recreation planning wicked problem - novel approach

Peggy Holroyd and Daniel Grant NPC - Feb. 17, 2016

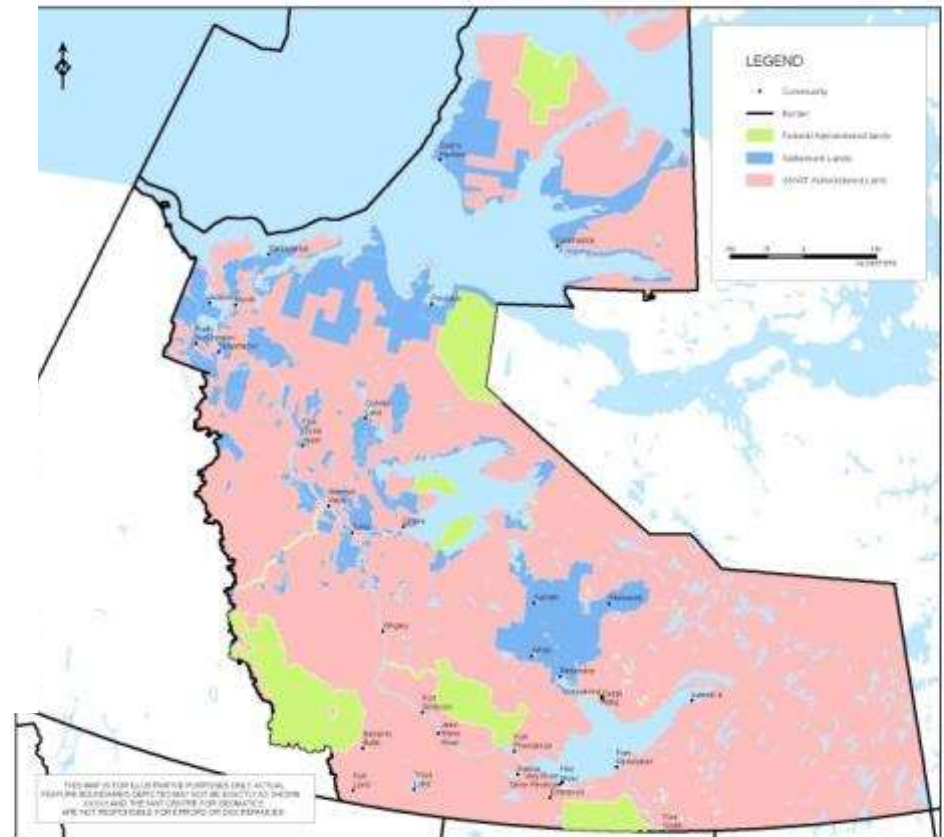
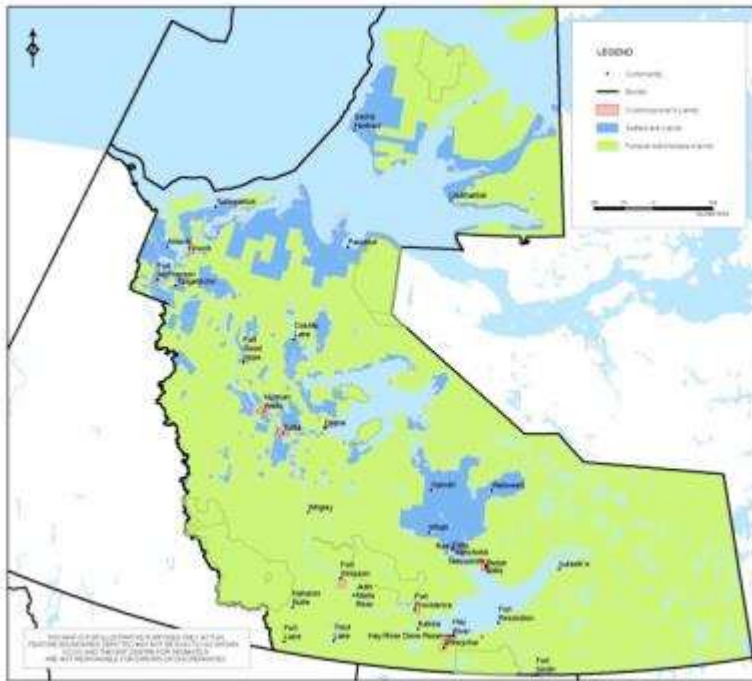
Government of  
Northwest Territories

# outdoor recreation – a wicked problem

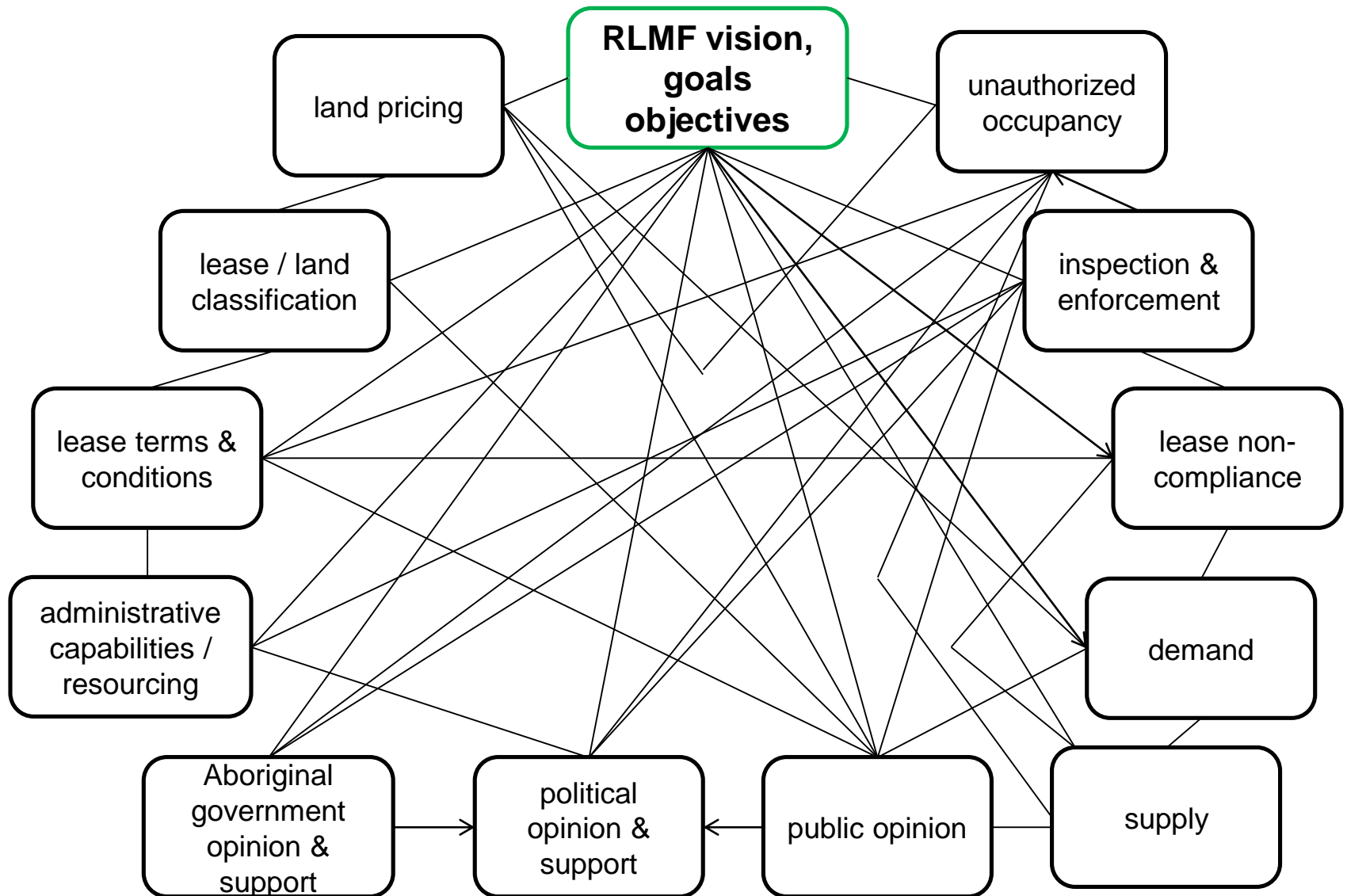
- VUCA
- multiple stakeholders
- changing conditions
- unknown metrics



# Recreational Land Management Framework



# web of interconnections



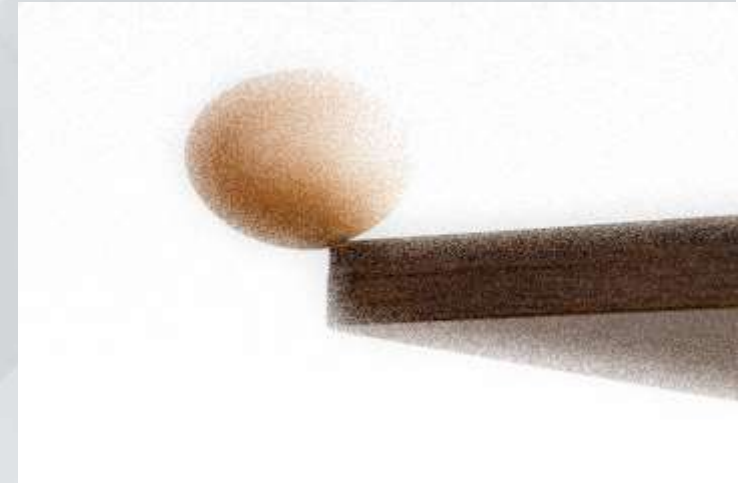
# recreation planning approaches are used to:

- estimate the ecological **and** social “carrying capacity” of water bodies – lakes
- develop a land classification system and managerial practices to guide and enhance recreational settings to optimize experiences / benefits
- identify, classify, assess and map (GIS) various constructed recreation facilities/amenities and supportive natural features
- survey motivation, activity, settings, experience, benefits

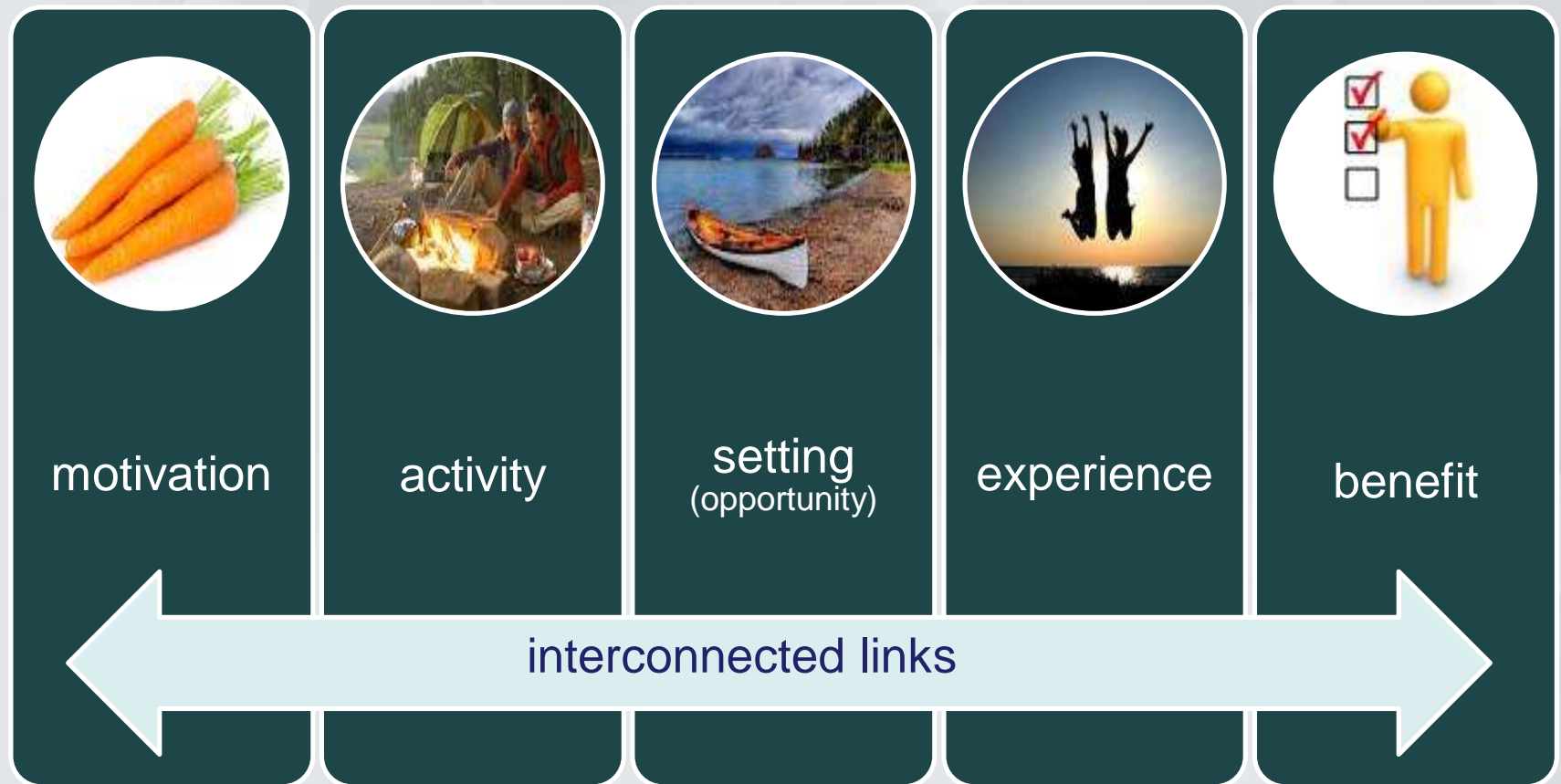


# lake carrying capacity and acceptable change

- concept born in the 1960s
- desire to find innate threshold
- both environmental and social effects from use levels
- multiple carrying capacities depending on objectives
- cc challenged for expert-driven methodologies and for not considering public values

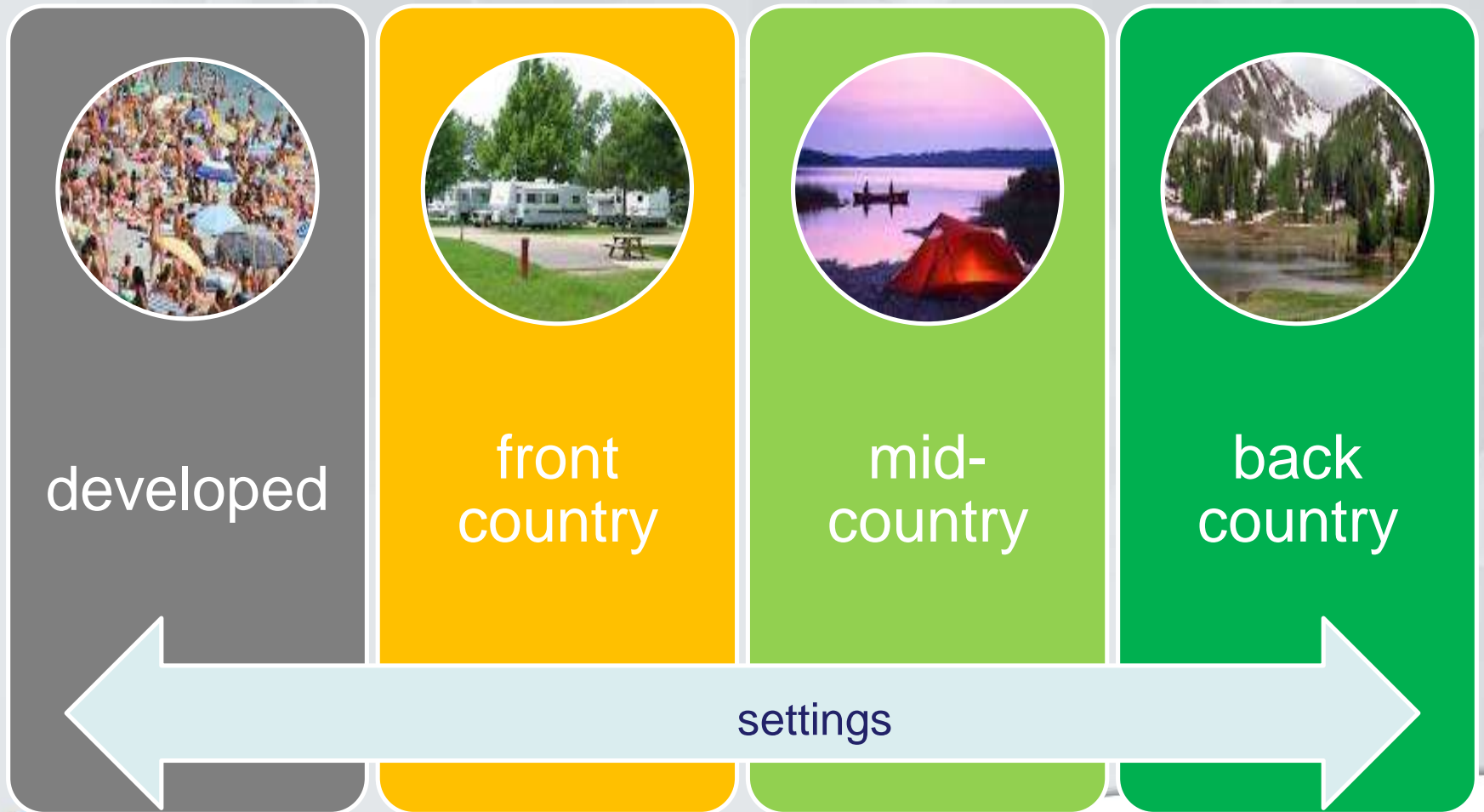


# water and land recreation opportunity spectrum

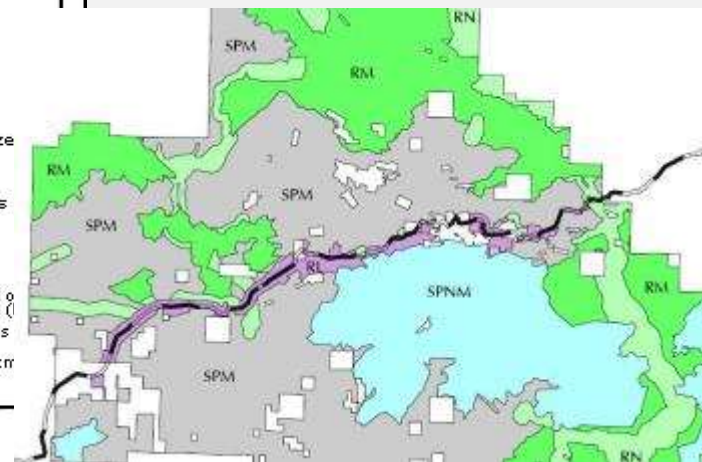
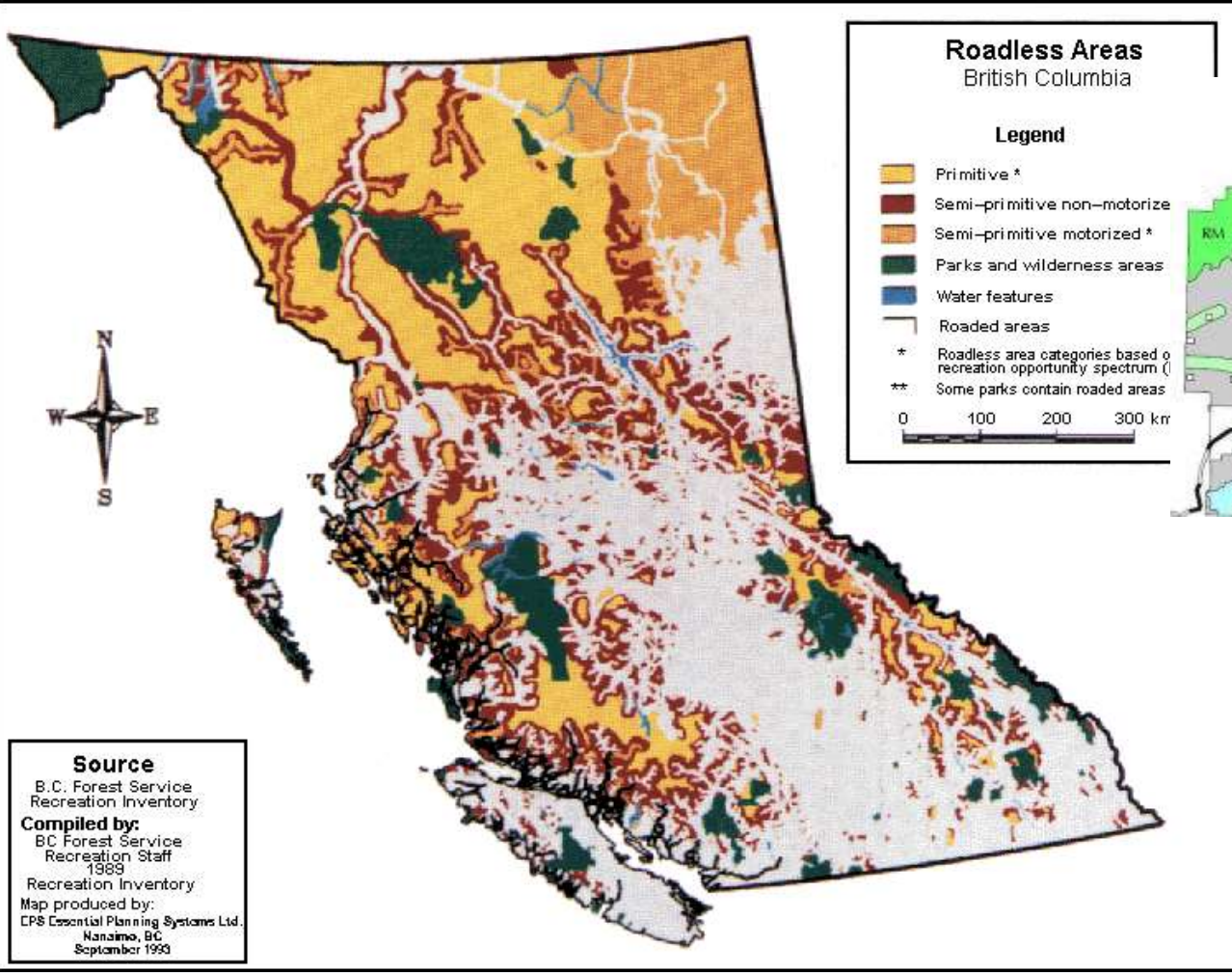




# opportunity spectrum . . .



# example of WALROS



Physical, social and managerial guidelines for each classification



# outdoor land use and demand studies

- surveys used to understand: who, what activities, when, frequency, why, location, preferred settings, spending, satisfaction
- random sample phone or mail surveys using closed open ended and multiple choice questions



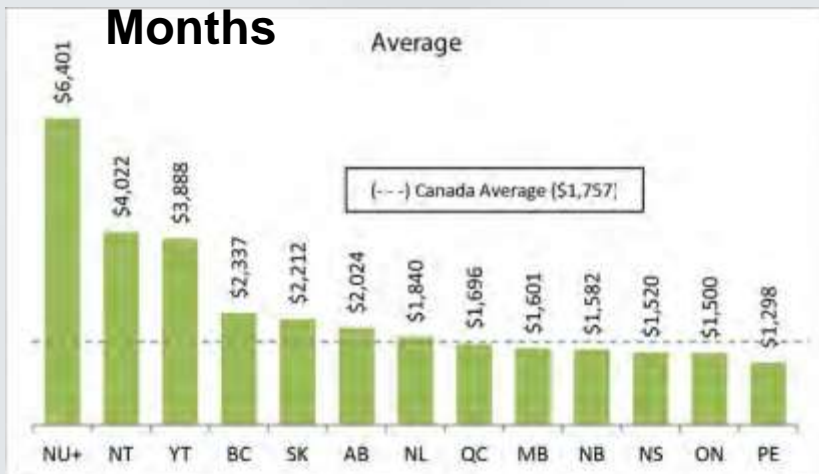
# 2012 Canadian Nature Survey

- to understand the importance of nature to Canadians measured by awareness, participation, and investments

**Canadian who choose where to live partly to have access to nature**



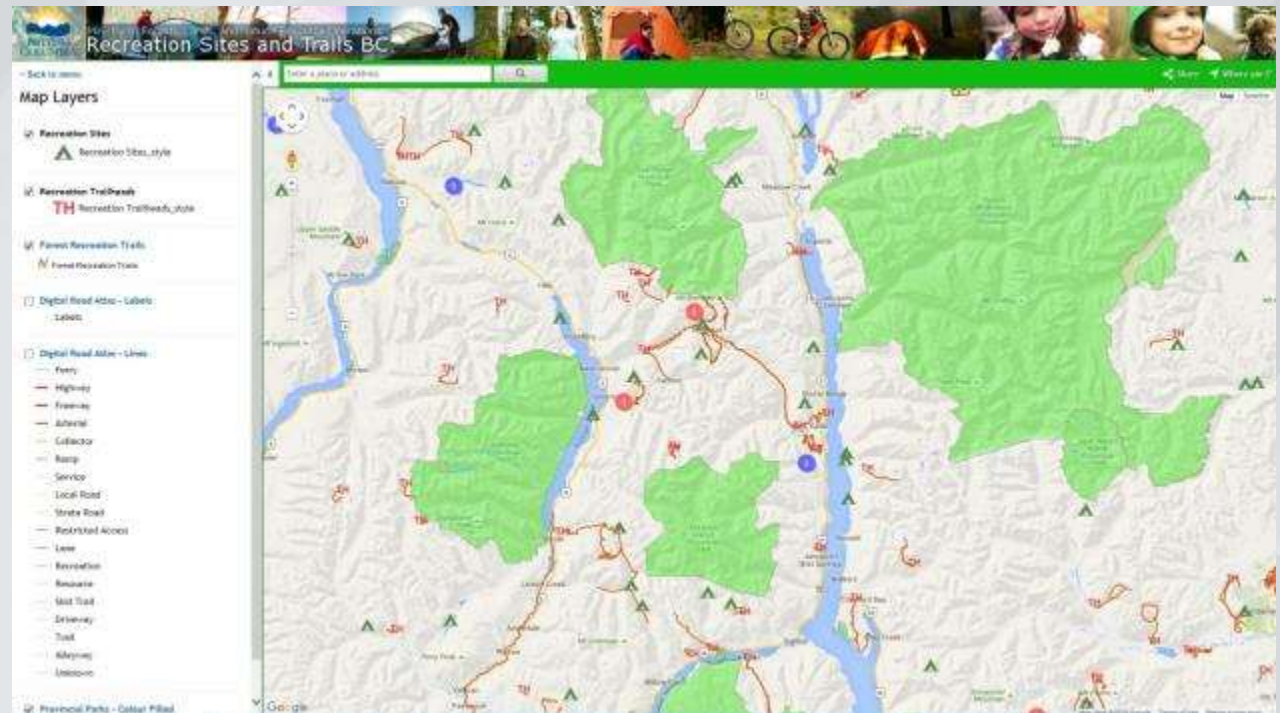
## Average Per-Person Expenditure in the Previous 12 Months



Data from Nunavut cannot be generalized to the population of the Territory, and are not calculated in national totals. See Survey Methods above.

# recreation resources inventories

- spatial information about recreation sites, trails, visual landscapes, features, opportunities and facilities
- questions of confidentiality, significance, and verification

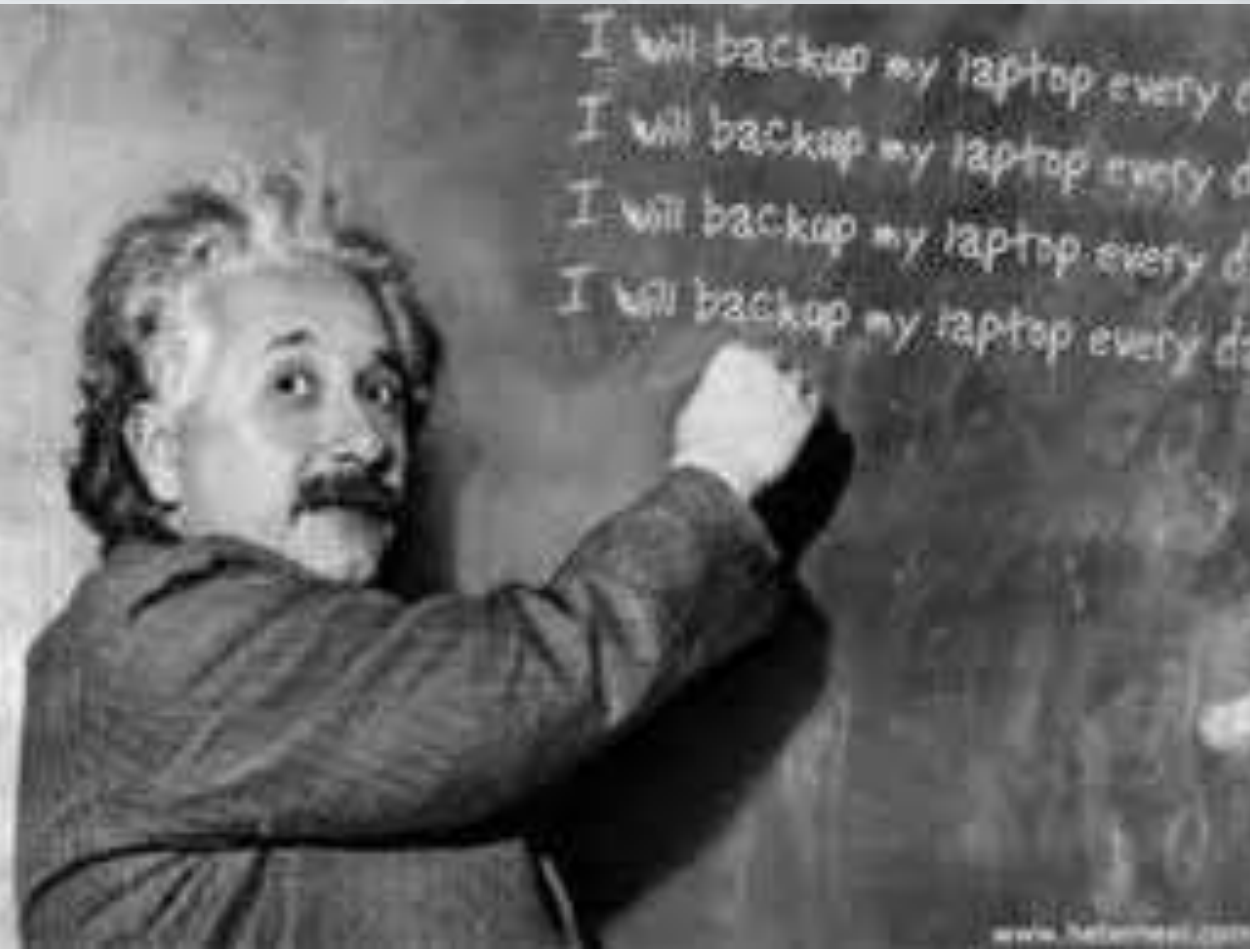


# summary of challenges of applying these methodologies

- multiple approaches needed to understand the context and problem
- most approaches bias RCM
- valuing personal and experiential knowledge
- role of the planner



# lessons for planners



good judgment  
comes from  
experience but  
experience  
comes from  
bad judgment!

